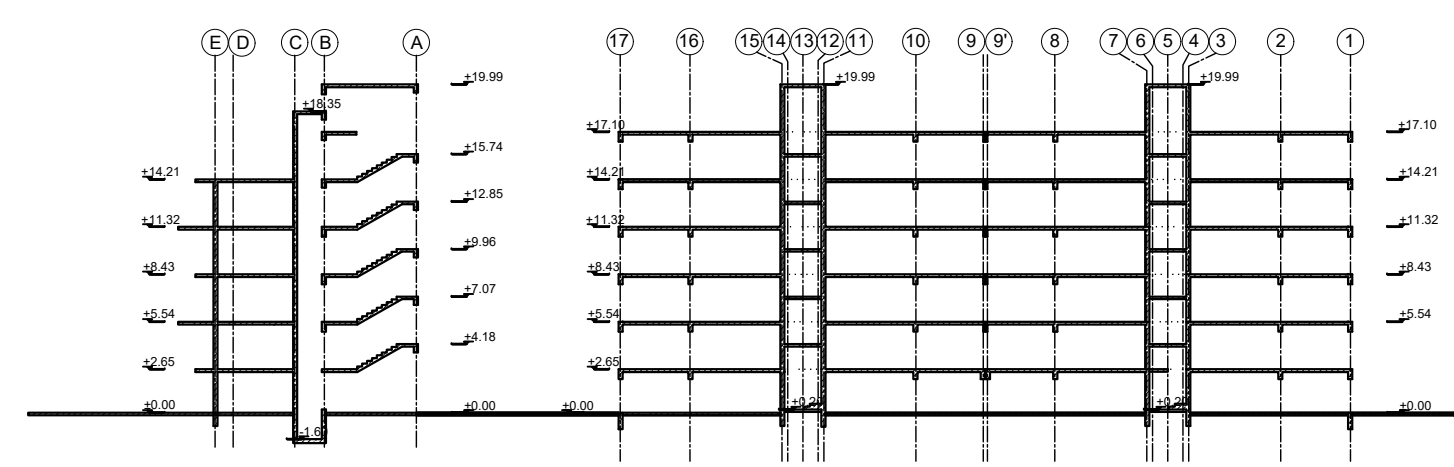
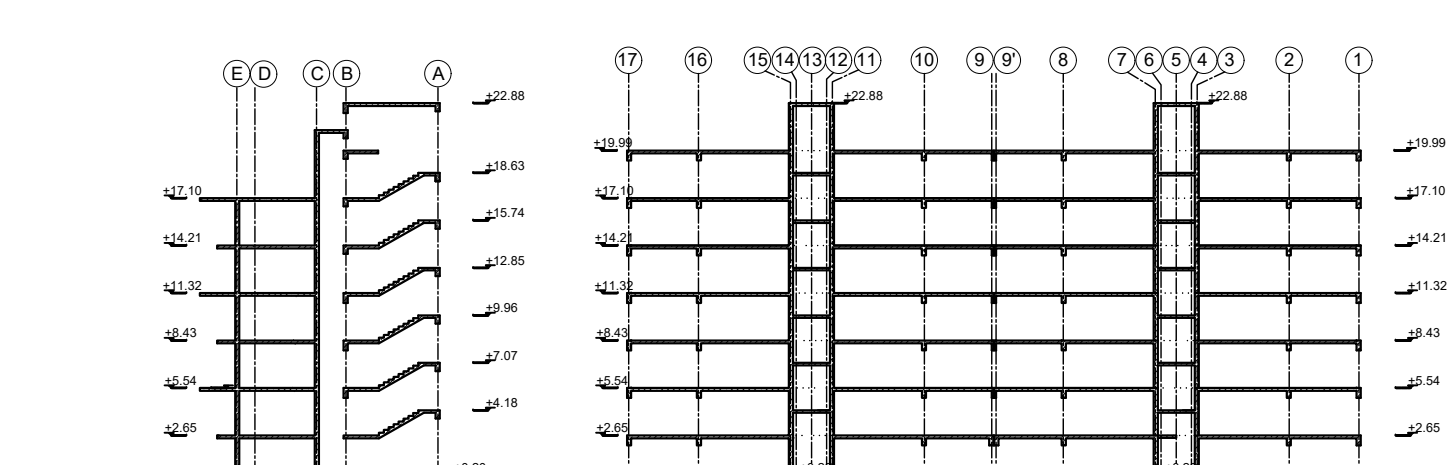


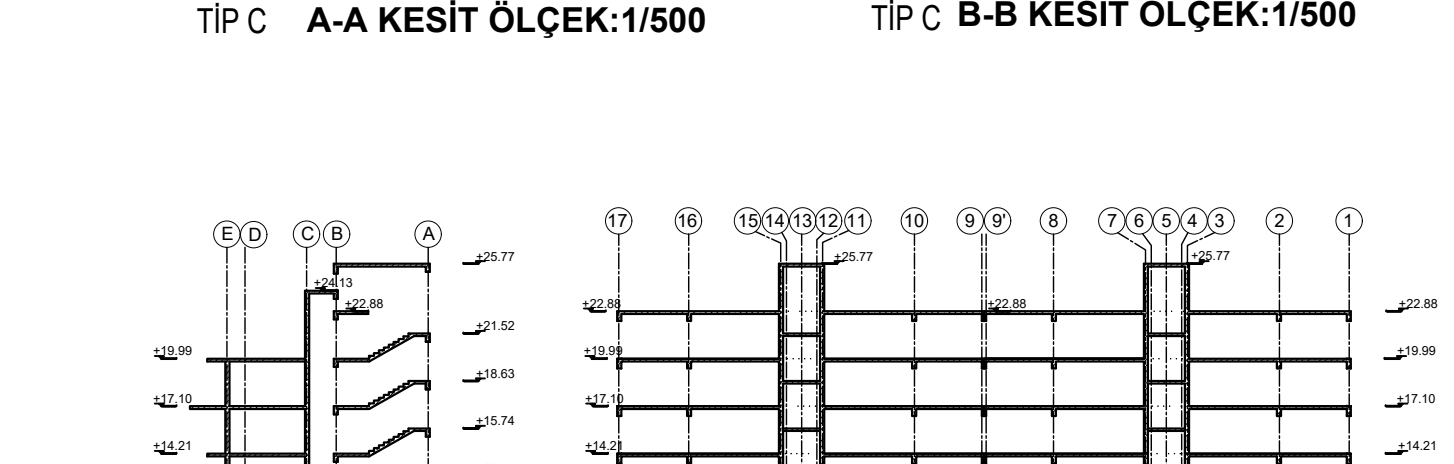
TIP A A-A KESİT ÖLÇEK:1/500



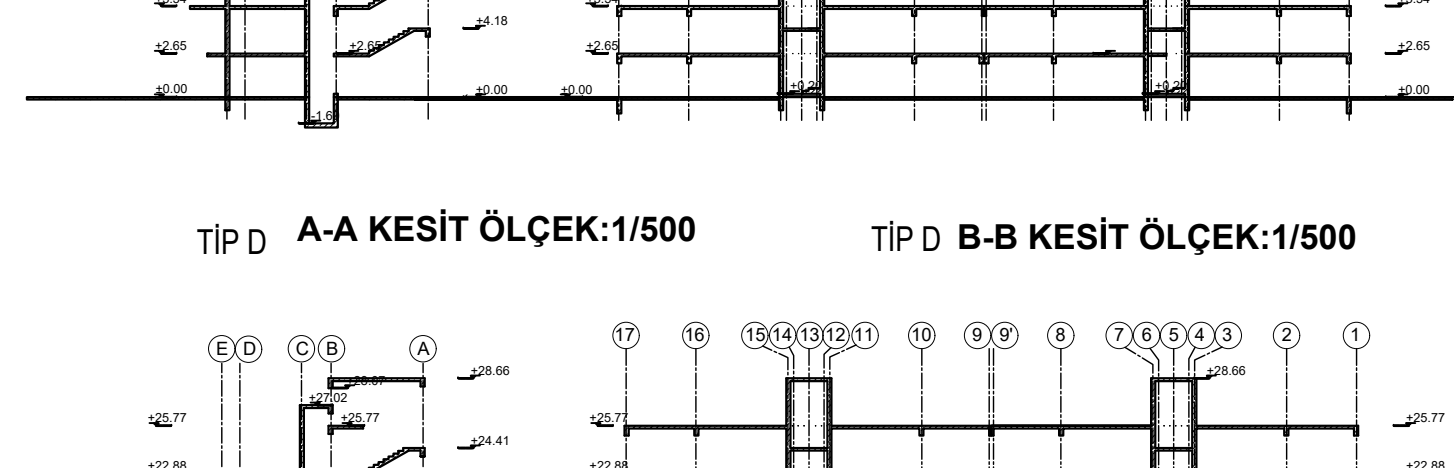
TIP A B-B KESİT ÖLÇEK:1/500



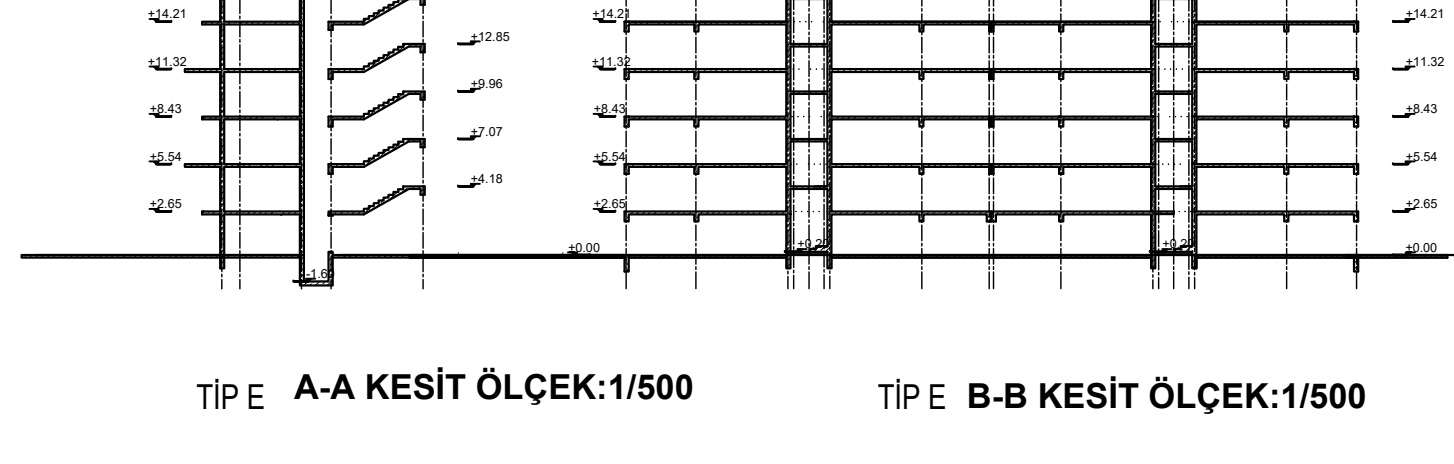
TIP B A-A KESİT ÖLÇEK:1/500



TIP B B-B KESİT ÖLÇEK:1/500



TIP C A-A KESİT ÖLÇEK:1/500



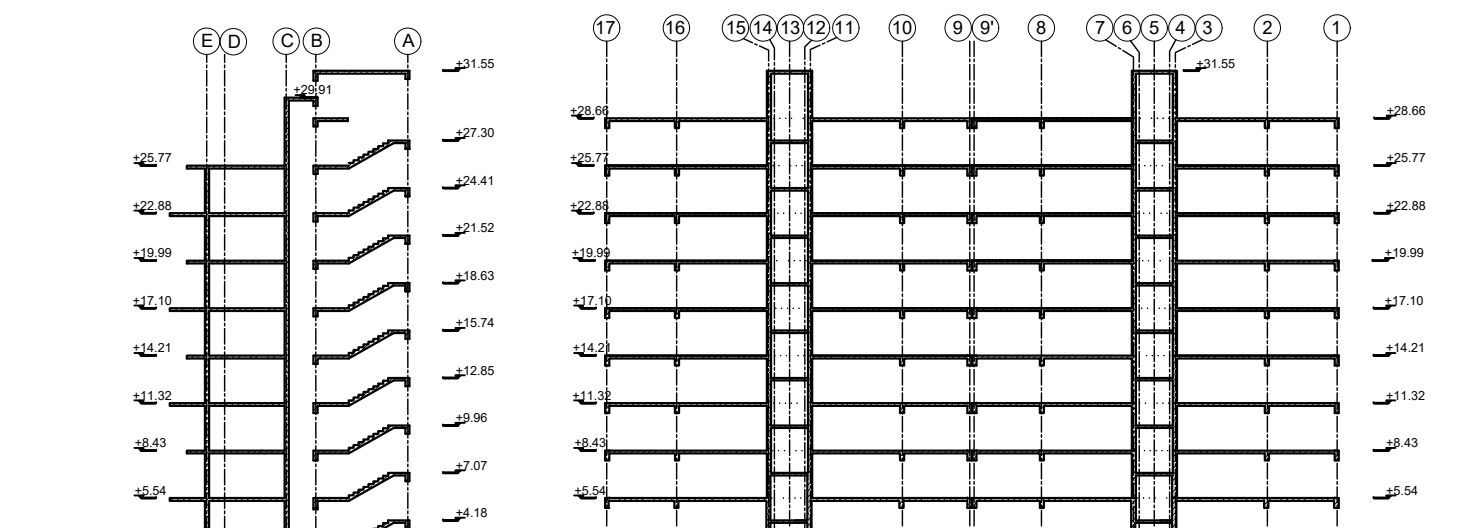
TIP C B-B KESİT ÖLÇEK:1/500



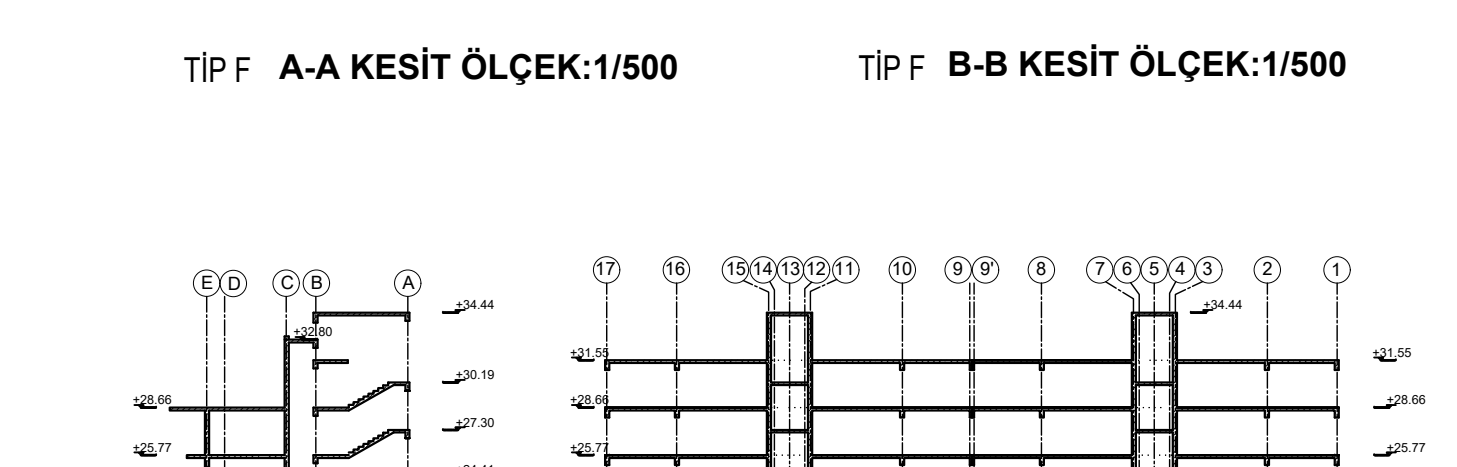
TIP D A-A KESİT ÖLÇEK:1/500



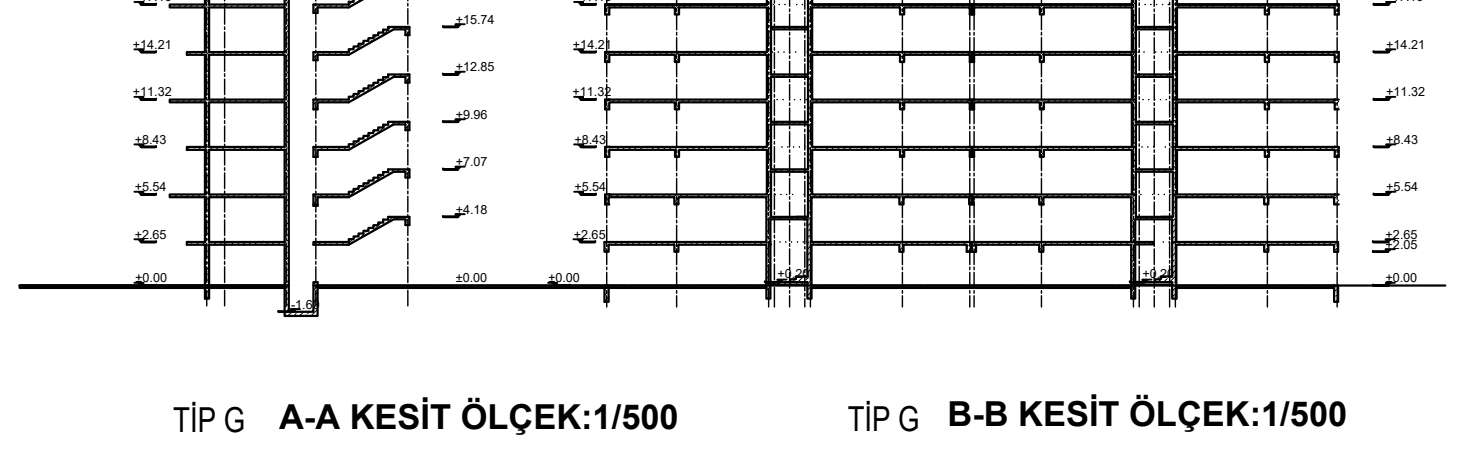
TIP D B-B KESİT ÖLÇEK:1/500



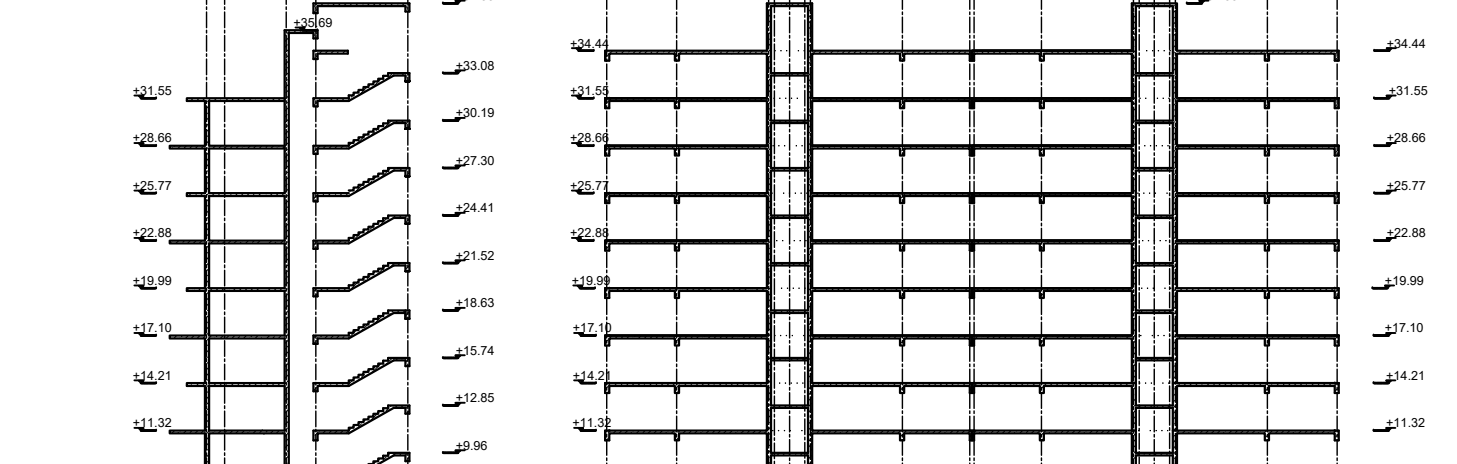
TIP F A-A KESİT ÖLÇEK:1/500



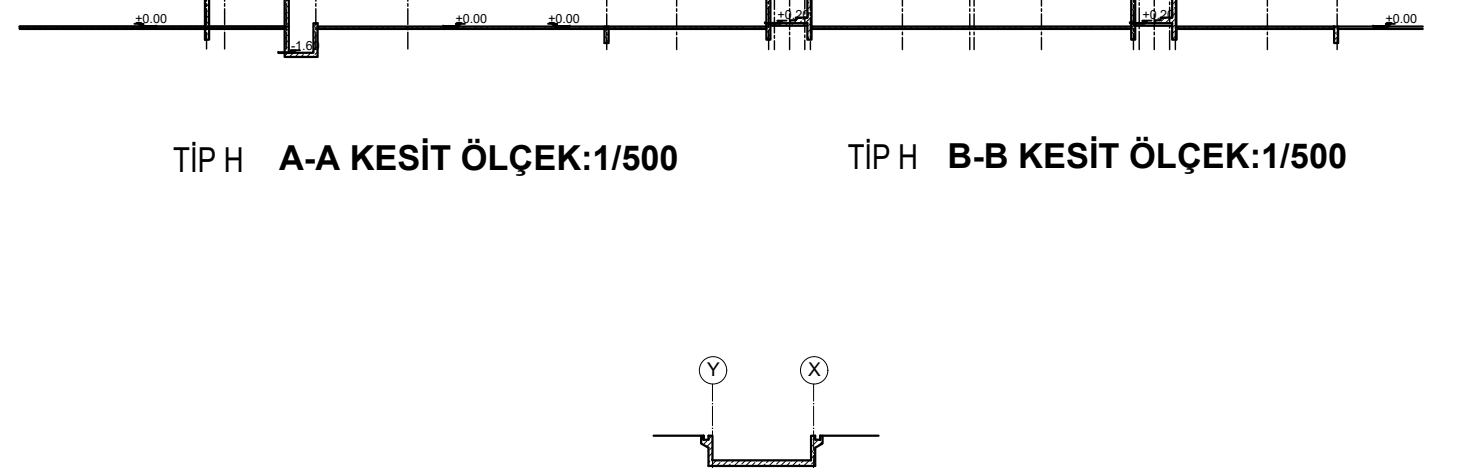
TIP F B-B KESİT ÖLÇEK:1/500



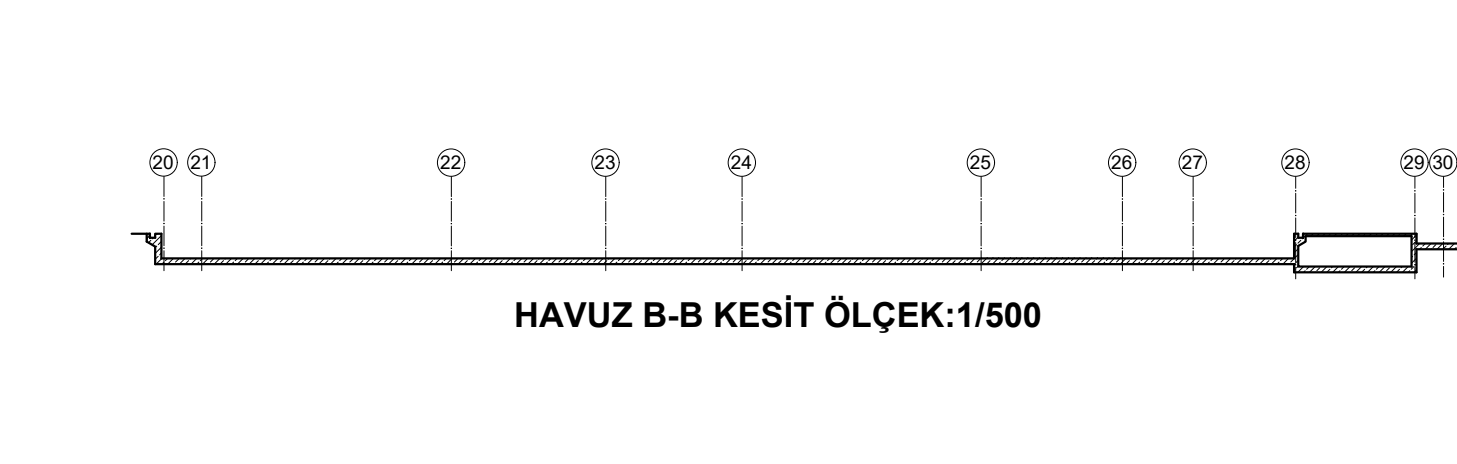
TIP G A-A KESİT ÖLÇEK:1/500



TIP G B-B KESİT ÖLÇEK:1/500



TIP H A-A KESİT ÖLÇEK:1/500



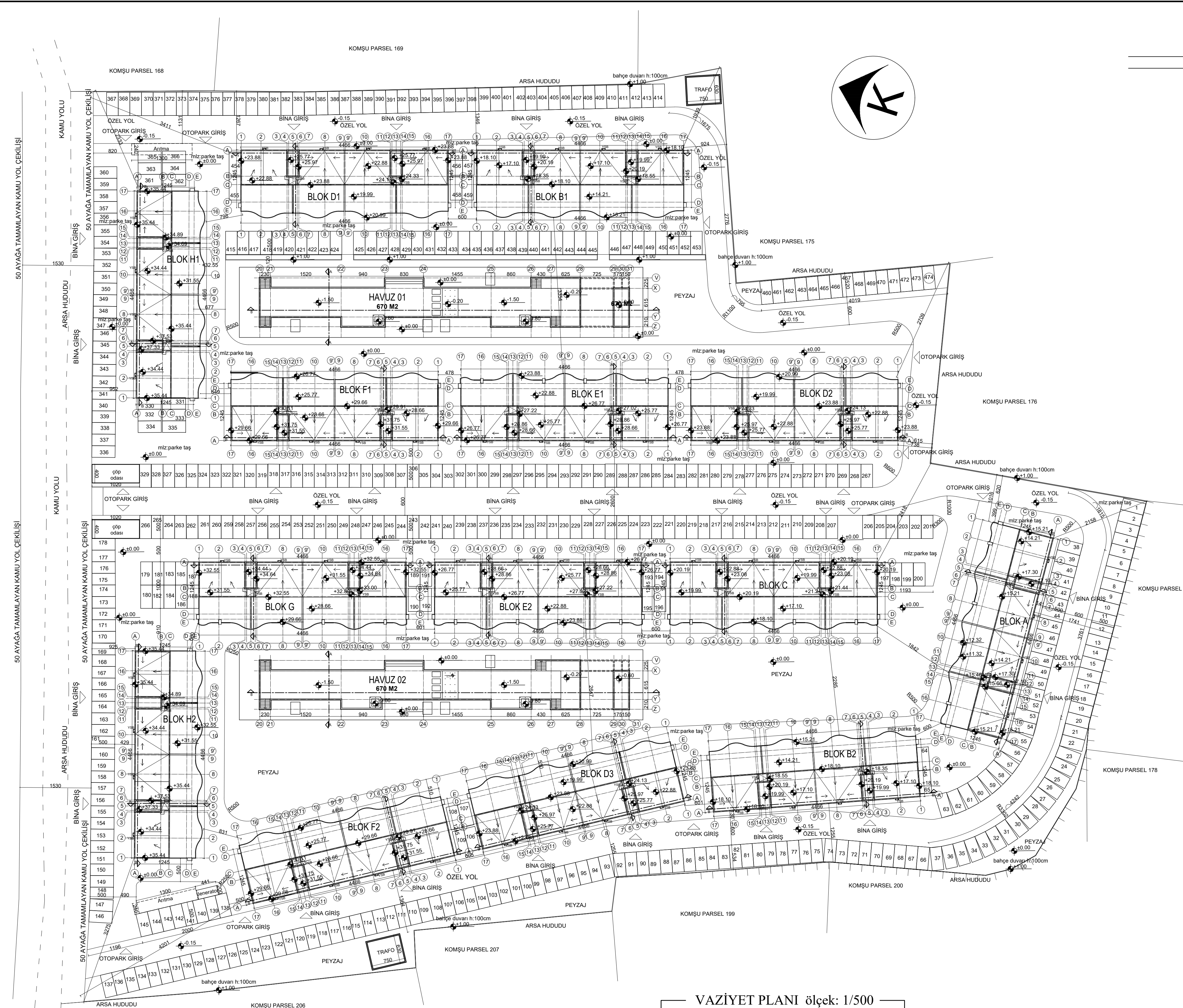
TIP H B-B KESİT ÖLÇEK:1/500



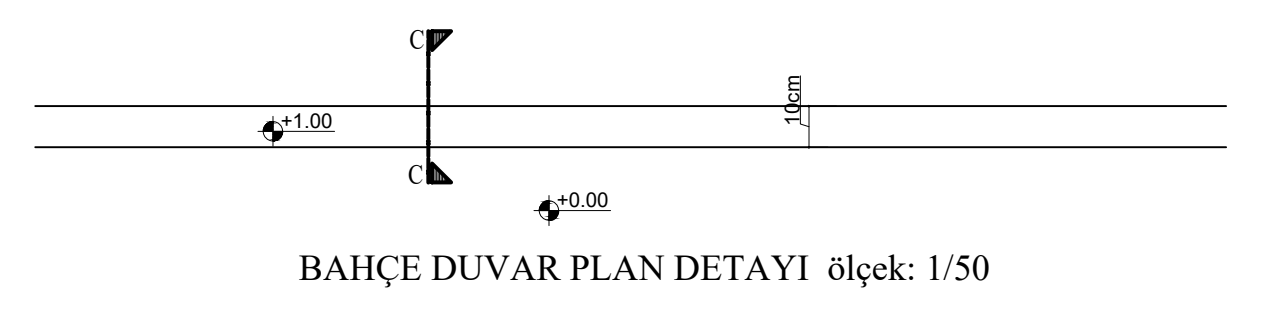
HAVUZ A-A KESİT ÖLÇEK:1/500



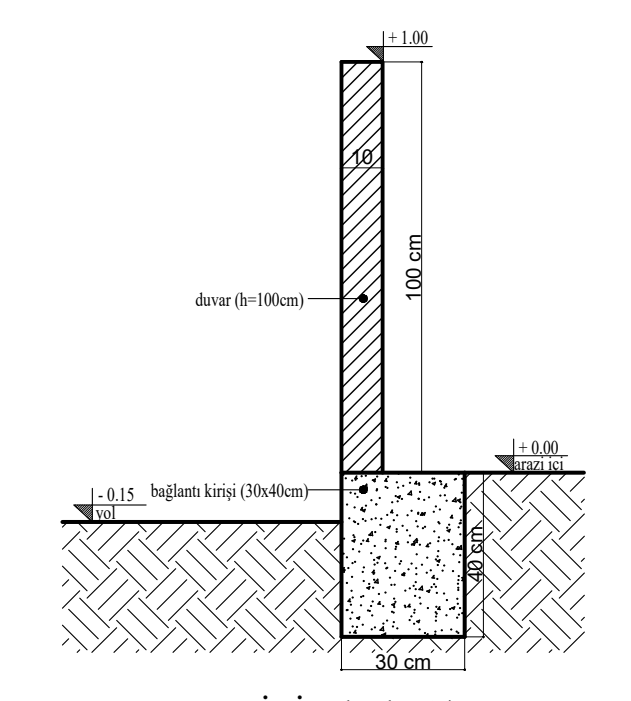
HAVUZ B-B KESİT ÖLÇEK:1/500



VAZİYET PLANI ölçek: 1/500



BAHÇE DUVAR PLAN DETAYI ölçek: 1/50



C-C KESİTİ ölçek: 1/50

YAPININ İSİMİ	PROJE İSİMİ	NOYAN & DÖRTER DEVELOPMENT LTD'YE AİT APARTMAN TİPİ KONUT & HAVUZ PROJESİ
Kazası	Belediyesi	Köyü
GAZİMUSGASPA	GEÇİTKALE	
Subahı	Mahallesi	Adı No
		140
Pafta No	Herit No	Parsel No
S31-A-25-C-2-C		205,203,170,175,176,200,201,175,171,20

YAPININ İSİMİ	PROJE İSİMİ	NOYAN & DÖRTER DEVELOPMENT LTD'YE AİT APARTMAN TİPİ KONUT & HAVUZ PROJESİ				
Mimarlık	İnşaat Sistemi	Br. Maliyeti TL / m ²	Kesim Alanı	Yapı Yaklaşık Maliyeti	Kullanım Amacı	Azami İhtiyaç Süresi
III	III	9495 TL	617 M2	8.858.415	YANILARA AÇIK OTOPARK (TIP A)	12 Ay
III	III	15160 TL	2191 M2	33.218.560	YANILARA AÇIK OTOPARK (TIP B)	
III	III	9495 TL	617 M2 X 2 adet =1234 M2	11.716.830	YANILARA AÇIK OTOPARK (TIP C)	
III	III	15160 TL	2305 M2 X 2 adet =4610 M2	85.138.560	YANILARA AÇIK OTOPARK (TIP D)	
III	III	9495 TL	617 M2	5.858.415	YANILARA AÇIK OTOPARK (TIP E)	
III	III	15160 TL	3425 M2	51.923.000	YANILARA AÇIK OTOPARK (TIP F)	
III	III	9495 TL	617 M2 X 3 adet =1851 M2	17.875.245	YANILARA AÇIK OTOPARK (TIP G)	
III	III	15160 TL	4642 M2 X 3 adet =13926 M2	183.330.160	YANILARA AÇIK OTOPARK (TIP H)	
III	III	9495 TL	617 M2 X 2 adet =1234 M2	11.716.830	YANILARA AÇIK OTOPARK (TIP I)	
III	III	15160 TL	4609 M2 X 2 adet =9218 M2	141.260.880	YANILARA AÇIK OTOPARK (TIP J)	
III	III	9495 TL	617 M2 X 2 adet =1234 M2	11.716.830	YANILARA AÇIK OTOPARK (TIP K)	
III	III	15160 TL	5276 M2 X 2 adet =10552 M2	159.946.320	YANILARA AÇIK OTOPARK (TIP L)	
III	III	9495 TL	617 M2	5.858.415	YANILARA AÇIK OTOPARK (TIP M)	
III	III	15160 TL	8005 M2	89.337.880	YANILARA AÇIK OTOPARK (TIP N)	
III	III	9495 TL	617 M2 X 2 adet =1234 M2	11.716.830	YANILARA AÇIK OTOPARK (TIP O)	
III	III	15160 TL	6510 M2 X 2 adet =13020 M2	197.383.200	YANILARA AÇIK OTOPARK (TIP P)	
III	III	17870 TL	670 M2	11.972.900	HAVUZ	
I	I	4420 TL	555 M2	2.453.100	BAHÇE DUVARI	

PROJE MÜELLİFİ	Adı Soyadı	Ödç Sicil No	Sorumluluk İmzası
Mimar	Begüm DÖRTER	Sicil No: 816	
İnşaat Mühendisi	Nişet İLKUÇU	Sicil No: 9103	
Özellik Kapası			

ODA VİZESİ